



18TH INTERNATIONAL ZEBRAFISH CONFERENCE

KYOTO, JAPAN | AUGUST 17-21, 2024

Welcome to the 18th International Zebrafish Conference!

Dear colleagues:

On behalf of the International Zebrafish Society (IZFS), and the organizing committee, it is our great pleasure to welcome you to the beautiful city of Kyoto for the 2024 International Zebrafish Conference (IZFC2024). The conference program reflects the wide scope of scientific activities taking place in the worldwide zebrafish research community.

IZFC2024 continues the strong tradition of bringing together researchers from all over the world using fish as a model organism (zebrafish and others) to study a wide range of different scientific questions, through both formal scientific sessions and equally important informal social gatherings, this year including a final banquet with cultural entertainment. We hope that the time you spend at this conference will be both exciting and enlightening!

The meeting has benefited from a dedicated and insightful organizing committee including Miguel Concha, Hiromi Hirata, Tohru Ishitani, Florence Marlow, Didier Stainier, Han Wang and Karina Yaniv. We would like to personally thank our hardworking organizers for putting together such an engaging scientific program. The organizers' emphasis on including presentations from trainees and junior investigators in the concurrent and plenary sessions has provided extensive opportunities for up-and-coming younger investigators to highlight their research findings and gain recognition from scientific colleagues. It's a key conference feature that always makes them so dynamic and exciting!

This meeting was made possible by close collaboration with the Japanese research community. By organizing the Japan IZFC Preparation Committee, they have been enthusiastically engaged in preparing for this meeting, including venue selection, planning practical matters to make all sessions and events successful, and raising funds from local private and public sources. We deeply thank them for their great efforts.

The support for IZFC2024 has been exceptional, with funds coming from a broad range of institutions, societies, foundations, companies, and organizations. The IZFS is extraordinarily grateful to all of our conference sponsors for their support – this conference would be impossible to carry out without not only their financial support but also their active participation. Each of the twenty-two IZFC2024 partners is providing useful information on their products and services available to meeting attendees. Check them out!

The IZFS is also proud to honor our awardees at IZFC 2024: Judith Eisen of the University of Oregon Institute of Neuroscience, recipient of the George Streisinger Award, and D'Juan Farmer, University of California, Los Angeles, recipient of the Chi-Bin Chien Award. Congratulations Judith and D'Juan! In addition to our two "signature" awards the IZFS is also giving travel awards to 33 IZFS members to provide them with assistance to attend this conference, and we will be giving out 8 poster awards acknowledging the research accomplishments of many more of our junior members!

We hope that these few days in Kyoto will be an opportunity to promote collaborations, strengthen your research, and get connected with known and new colleagues.

Thank you very much for joining us at IZFC2024!

Corinne Houart (President & Chair) and Hitoshi Okamoto (Co-Chair)

Table of contents

Welcome to the 18th IZFC!	1
Organizing Committees	3
Map & Exhibitor Booths	4
Thank you Sponsors	7
Program	8
2024 Award Winners	15
Keynote Lecturers	18
Poster Board Map	20
Guide to Kyoto	22



Download the IZFC Meeting App!

- Personalize your agenda
- Receive event updates and notifications
- Connect with other attendees

www.whova.com/portal/webapp/izc_202408/

Already have the Whova App? Use the invitation code **2024zebrafish**

Welcome Note from the Japan IZFC Preparation Committee

We want to extend our warmest welcome to you for coming to Kyoto to participate in the IZFC2024. We chose Kyoto as the venue of this meeting not only for its long history as the capital of Japan for 1000 years but also for its significant role in the development of science and technology. Kyoto, with its unique blend of tradition and innovation, is a perfect place for our meeting. We hope you enjoy the special culture of Kyoto as the intersection of old and new during your stay.

The Japanese have a long tradition of breeding small fish such as medaka and goldfish as a hobby and using them for biological research. Therefore, since zebrafish research was introduced into Japan, researchers studying zebrafish and medaka have created a shared community to hold the annual conference of small fishes, which is referred to as Japanese Medaka and Zebrafish Meeting. This cooperative spirit has brought about many unique achievements including the medaka-derived Tol2 transposon, which is applicable to transgenesis in zebrafish. Honoring this tradition, zebrafish and medaka researchers in Japan have worked together in the local preparation committee for the IZFC2024 to make this meeting exciting, enjoyable, and fruitful. Each committee member has worked hard to raise funds from local resources, plan the layouts of the venue, and set up minutes for sessions and banquets, among others. We deeply appreciate for their great deal of support.

In late August, after the Daimonji Fire Festival, Kyoto will still be sweltering hot and humid outdoors. But we hope you enjoy hot discussions on cool results indoors.

On behalf of the Japan IZFC Preparation Committee,
Hitoshi Okamoto, MD, PhD, Hiromi Hirata, PhD and Tohru Ishitani, PhD

18th IZFC Organizing Committee



Corinne Houart, PhD
Chair of the 18th IZFC
President of the IZFS
King's College London



Hitoshi Okamoto, MD, PhD
Co-Chair of the 18th IZFC
RIKEN Center for Brain Science



Miguel Luis Concha, PhD
Universidad de Chile



Didier Stainier, PhD
Max Planck Institute of Heart
and Lung Research



Hiromi Hirata, PhD
Aoyama Gakuin University



Han Wang, PhD
Center for Circadian Clocks,
Soochow University



Tohru Ishitani, PhD
Osaka University



Karina Yaniv, PhD
Weizmann Institute of Science



Florence Marlow, PhD
Icahn School of
Medicine Mount Sinai

18th IZFC Local Organizing Committee

Satoshi Ansai

Kyoto University

Kazuhide Asakawa

National Institute of Genetics

Toshikatsu Hanada

Oita University

Masahiko Hibi

Nagoya University

Shinichi Higashijima

National Institute for Basic Biology

Motoyuki Itoh

Chiba University

Koichi Kawakami

National Institute of Genetics

Kazu Kikuchi

National Cerebral and
Cardiovascular Center

Shosei Kishida

Kagoshima University

Jun Kitano

National Institute of Genetics

Makoto Kobayashi

Tsukuba University

Fumi Kubo

National Institute of Genetics

Rie Kusakabe

Kansai University

Ichiro Masai

Okinawa Institute of
Science and Technology

Takaaki Matsui

Nara Institute of Science and
Technology

Yuichiro Mishima

Kyoto Sangyo University

Kaoki Mochizuki

National Cerebral and
Cardiovascular Center

Kazutoshi Mori

Kyoto University

Nobuhiro Nakamura

Kyoto Sangyo University

Kiyoshi Naruse

National Institute for Basic Biology

Hiroshi Nishina

Tokyo Medical Dental University

Yukiko Oginō

Kyushu University

Yoshihiro Omori

Nagahama Institute of Bioscience
and Technology

Li-Kun Phng

Riken

Atsuko Sehara

Kyoto University

Yukihiko Sugimoto

Kumamoto University

Hiroyuki Takeda

Kyoto Sangyo University

Hideaki Takeuchi

Tohoku University

Soken Tsuchiya

Kumamoto University

Sachiko Tsuda

Saitama University

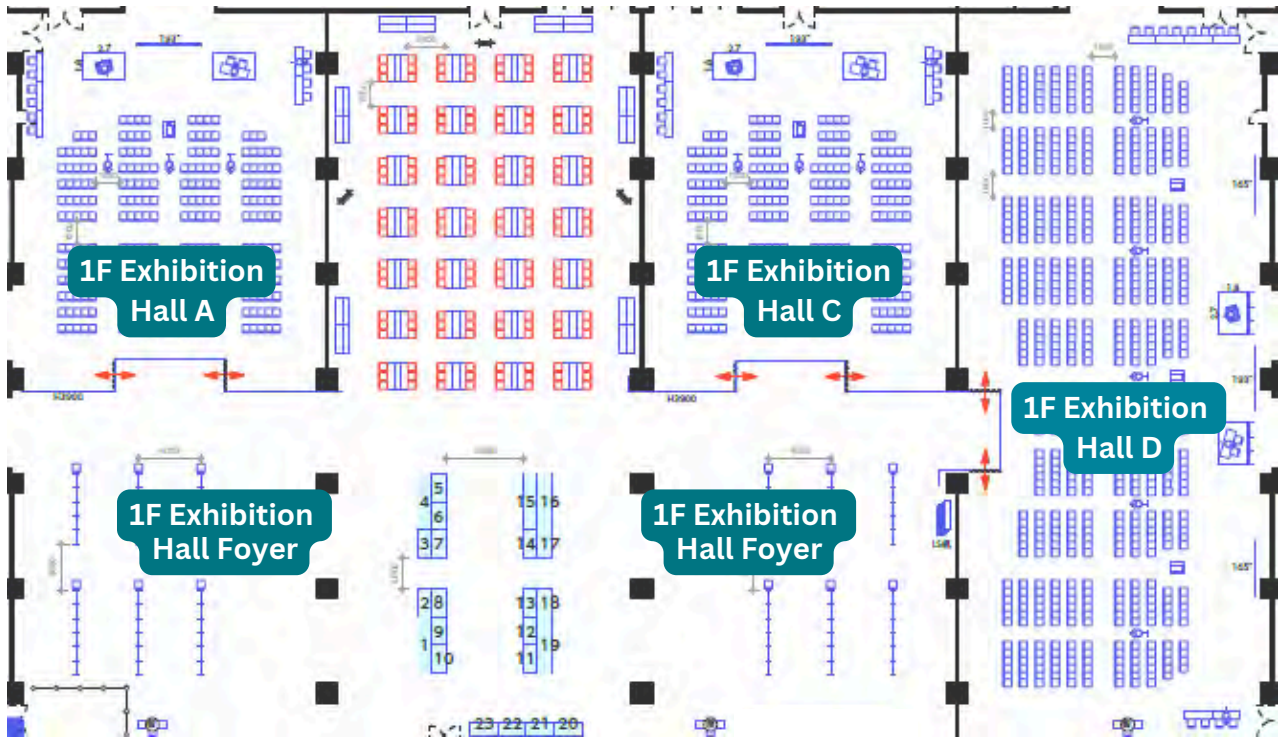
Hironori Wada

Kitazato University

Saori Yokoi

Hokkaido University

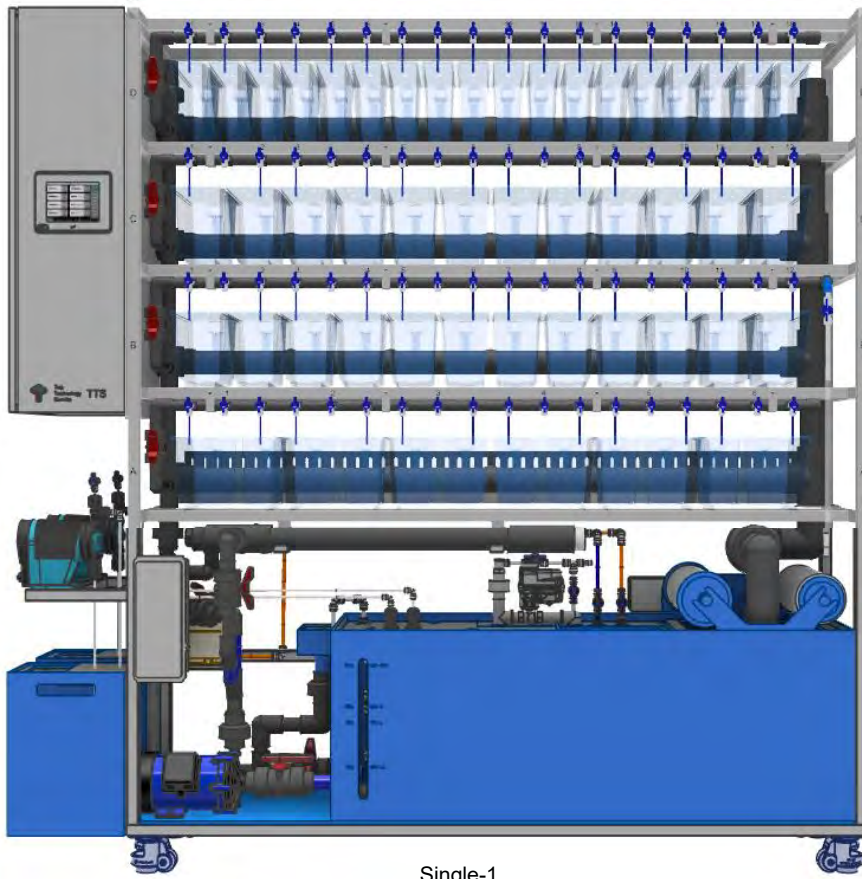
Miyako Messe Map



Exhibitor Booths

Aquaneering	19
BEX	2
CEM Japan	21
EVIDENT	15
IDEA Bio-Medical	5
IWAKI	7
Life Science Methods	14
Luxendo GmbH, Bruker Florescence Microscopy	12
Meito Suien	20
NBRP Medaka	9
NBRP Zebrafish	10
Nikon Solutions	4
Oxford Instruments	23
Pneum Co., Ltd.	6
Sparos Lda	8
Sutter Instruments	16
Tecniplast	18
Thorlabs	1
TTS	22
Union Biometrica	17
ViewPoint Life Sciences	13
Zantiks	11
Zeiss	3

Explore Our Cutting-Edge Aquaculture System for Zebrafish, Xenopus, and Other Aquatic Organisms, Tailored for Research Facilities of All Dimensions!!!



Single-1

Aquaculture system Overview

- Step 1 Water filtration
 - Automatic rolling mechanic filter
 - Biofilter

- Step 2 Water quality control
 - System sensors: pH, Conductivity, Temperature, Water level
 - Water-quality controllers: Heater, Chiller(Optional), DO(Optional)
 - Automatic dosing Equipment : Buffer tanks(pH and Conductivity), Reverse osmosis water filter

- Step 3 System water sterilization
 - UV lamp

- Step 4 System maintenance
 - Circulation Pump
 - Overflow Piping
 - Automatic water supply
 - Automatic drain
 - System monitor and controller

Automatic Rolling Mechanic Filter



- 25µm, 50µm, and 100µm filter roll
- Self-checking filter status:
When water does not flow through the filter, it automatically replaces to a new filter.
- Filter roll replacement alert
- Recommended replacement interval:
One Roll Every 2 to 3 Months
- Easy replacement of a filter roll

Control panel



- Monitoring parameters :
pH, Conductivity, DO, Water temperature, filter usage, Water level
- Scheduling of daily water exchange
- Alert system
- 5 inch touch screen

Water inlet valve for the tank



- Quick-Connect System:
Tool-free valve and tube replacement

HOUSING TANKS & ACCESSORIES



1.5L



3L



7L



- Fry screen – 400 micron
- Fry screen – 800 micron
- Adult Baffle

- Housing tanks and baffles
 - made of non-toxic, certified materials
 - autoclavable
 - Designed with coloration to reduce algae growth
 - Indicators for normal water level and baffle change
- These three housing tanks can be applied to any racks that we provide.

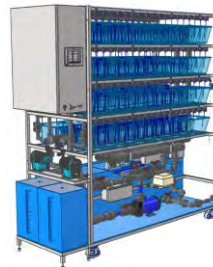
HOUSING SOLUTIONS



Small



Single-2



Double-1 <Front>



Double-1 <Rear>



Double-2



Double-3



Automatic Feeding system

Model	Small	Single-1	Single-2	Double-1	Double-2	Double-3
Water Tank	Min 4 rows Max 7 rows	Min 4 rows Max 7 rows	Min 4 rows Max 6 rows	Min 4 rows Max 6 rows	Min 4 rows Max 6 rows	Min 4 rows Max 6 rows
1.5L	9×4 rows=36ea	18×4 rows=72ea	18×4 rows×2=144ea	18×4 rows×2=144ea	18×4 rows×4=288ea	18×4 rows×6=432ea
3L	6×4 rows=24ea	12×4 rows=48ea	12×4 rows×2=96ea	12×4 rows×2=96ea	12×4 rows×4=192ea	12×4 rows×6=288ea
7L	3×4 rows=12ea	6×4 rows=24ea	6×4 rows×2=48ea	6×4 rows×2=48ea	6×4 rows×4=96ea	6×4 rows×6=144ea

▪ The Double-1 model can be upgraded to Double-2 and Double-3 without needing an additional control panel or dosing equipment.

▪ We offer 17L and 25L tanks suitable for Xenopus, and we can customize tanks of other sizes upon request.

▪ Upon customer request, the water quality control system can be tailored to meet specific needs.

Thank you Sponsors

Gold Level Sponsors



Silver Level Sponsors

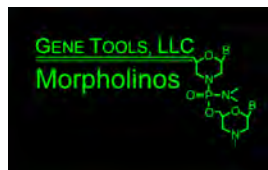


Seeing beyond

Bronze Level Sponsors



We Simplify Science



IDEA Bio-Medical
Seeing Better



日本を生きるあなたへ。
クラシエの漢方



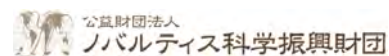
ANDOR



Poster Prize Sponsors



Grant Support



Saturday, August 17

2:00PM - 3:00PM

REGISTRATION AND CHECK-IN

1F Exhibition Hall Foyer

3:00PM - 4:00PM

OPENING REMARKS & KEYNOTE LECTURE

1F Exhibition Hall D

Mechanism Research on Epigenetic Regulation of Reproductive Development from Model Animals to Human Beings

Jie Qiao, MD, PhD

Moderator: Han Wang, PhD

4:00PM - 5:30PM

PLENARY I

1F Exhibition Hall D

Moderators: Miguel Luis Concha, PhD & Florence Marlow, PhD

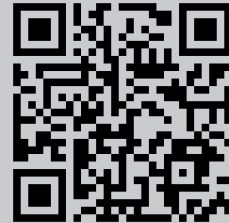
5:30PM - 7:00PM

OPENING RECEPTION

1F Exhibition Hall Foyer

Drinks & Hors d'Oeuvres

Download the
IZFC Meeting App!



Access Code: 2024zebrafish

Sunday, August 18

8:30AM - 10:00AM

CONCURRENT SESSION I

EARLY DEVELOPMENT, MORPHOGENESIS AND PATTERNING I

1F Exhibition Hall D

Moderators: Amber Stratman, PhD & Li-Kun Phng, PhD

CARDIOVASCULAR

1F Exhibition Hall A

Moderators: Drew Robson, PhD & Takashi Kawashima, PhD

CIRCUITS AND BEHAVIOR

1F Exhibition Hall C

Moderators: Tohru Ishitani, PhD & Gage Crump, PhD

10:00AM - 10:30AM

COFFEE BREAK

1F Exhibition Hall Foyer

10:30AM - 12:00PM

PLENARY II

1F Exhibition Hall D

Moderators: Kelly Monk, PhD & Chengtian Zhao, PhD

12:00PM - 1:00PM

LUNCHEON I

SPONSORED BY TECNIPLAST

1F Exhibition Hall D

Lrrn2 and Lrrn3a Cell Adhesion Molecules Govern Precise Retina-Tectal Circuit Formation in the Zebrafish Visual System
Filippo Del Bene, PhD

1:00PM - 2:45PM

POSTER SESSION I

1F Exhibition Hall Foyer

Topics: Cell Biology, Circuits & Behavior, Infection & Immunity, Neurobiology, Other and Reproduction

3:00PM - 4:00PM

WORKSHOP SESSION I

ALTERNATIVE SMALL FISH MODEL: A UNIQUE OPPORTUNITY FOR FRONTIER BASIC AND APPLIED RESEARCH

1F Exhibition Hall D

SHAPING THE FUTURE OF EARLY-CAREER ZEBRAFISH RESEARCHERS

1F Exhibition Hall A

SWIMMING TOGETHER TOWARDS A SUSTAINABLE FUTURE

1F Exhibition Hall C

4:00PM - 4:45PM

COFFEE BREAK

1F Exhibition Hall Foyer

4:45PM - 5:30PM

GEORGE STRESINGER AWARD LECTURE

1F Exhibition Hall D

Making Connections for a Life in Science

Judith Eisen, PhD

Moderator: Hitoshi Okamoto, MD, PhD

5:30PM - 7:00PM

PLENARY III

1F Exhibition Hall Foyer

Moderators: Hiromi Hirata, PhD & Feng Liu, PhD

Monday, August 19

8:30AM - 10:00AM

CONCURRENT SESSION II

NEUROBIOLOGY I

1F Exhibition Hall D

Moderators: Hitoshi Okamoto, MD, PhD & Jennifer Li, PhD

ORGAN BIOLOGY

1F Exhibition Hall A

Moderators: Zhaoxia Sun, PhD & Ken Poss, PhD

REPRODUCTION: GERMLINE, SEX DETERMINATION & REPRODUCTIVE HEALTH

1F Exhibition Hall C

Moderators: Yaniv Elkouby, PhD & Satoshi Ansai, PhD

10:00AM - 10:30AM

COFFEE BREAK

1F Exhibition Hall Foyer

10:30AM - 12:00PM

CONCURRENT SESSION III

EMERGING TECHNOLOGIES

1F Exhibition Hall D

Moderators: Shialou Yuan, PhD & Sean Megason, PhD

CELL BIOLOGY

1F Exhibition Hall A

Moderators: Gage Crump, PhD & Steffen Scholpp, PhD

DISEASE MODELS

1F Exhibition Hall C

Moderators: Hideaki Matsui, PhD & Kazuhide Asakawa, PhD

12:00PM - 1:00PM

LUNCHEON II

SPONSORED BY EVIDENT

1F Exhibition Hall D

Unveiling Circulatory Organ Development and Homeostasis through In Vivo Fluorescence Imaging

Hiroyuki Nakajima, PhD

12:00PM - 1:00PM

LUNCHEON II

SPONSORED BY THORLABS

1F Exhibition Hall A

Tilttable Objective Microscope: A New Approach to Imaging Head Motion Transduction in Larval Zebrafish

Masashi Tanimoto, PhD

1:00PM - 2:45PM

POSTER SESSION II

1F Exhibition Hall Foyer

Topics: Cardiovascular, Disease Models, Emerging Technologies, Evolution & Comparative Biology, and High Throughput Whole Organism Research

3:00PM - 4:00PM

KEYNOTE LECTURE

1F Exhibition Hall D

Searching for Principles of Tissue Regeneration and Aging in Mammalian Skin

Emi K. Nishimura, MD, PhD

Moderator: *Tohru Ishitani, PhD*

4:00PM - 4:45PM

COFFEE BREAK

1F Exhibition Hall Foyer

4:45PM - 5:30PM

CHRISTIANE NÜSSLEIN-VOLHARD AWARD LECTURE

1F Exhibition Hall D

Left Side Story – a Tale of Genes, Eyes and Developing Brains

Stephen Wilson, PhD

Moderator: *Gil Levkovitz, PhD*

5:30PM - 7:00PM

PLENARY IV

1F Exhibition Hall D

Moderators: Edan Foley, PhD & Yonghua Sun, PhD

TRITONE XS

COMPACT SOLUTION for EFFORTLESS FEEDING

- SMALL FOOTPRINT, EASY AND QUICK TO INSTALL
- SUITED FOR STANDALONE SYSTEMS OR SMALL LABS
- DISPENSES 2X DRY DIETS AND 1X LIQUID DIET
- DRY DIET BOTTLES EASY CLIP ON MAGNETS
- FASTER RETURN ON INVESTMENT



Easy to refill



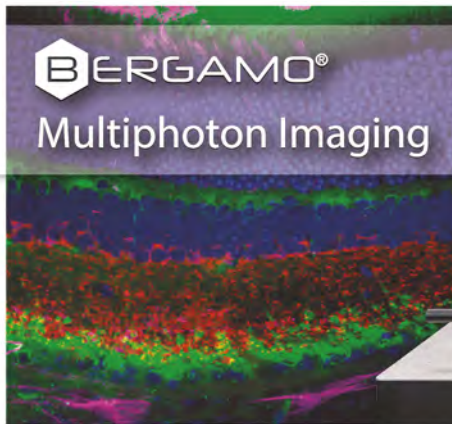
Liquid diet

2x dry diets



多光子顕微鏡プラットフォーム Bergamo II

多様な実験用途に対応 – モジュール式多光子顕微鏡システム



■ 2光子・3光子・回転スコープ 構成例



特長

- 最先端 *in vivo* イメージングを実現する3つのオプション
 - ベッセルビームを用いた高速ボリューム画像取得
 - 800~1800 nmの広帯域をカバーする3光子励起用光学系
 - 空間光変調器(SLM)を用いた同時多点光刺激
- 実験用途に合わせて顕微鏡を構成できる高い柔軟性
- 回転スコープ仕様はあらゆる角度から試料を観察($\Delta \theta$ 最大100°)
- 共焦点イメージング機能を追加可能
- 複数のスキャナを有するデュアル走査システムに対応

■ エントリーモデル 構成例



■ 主なオプション一覧

- 走査系
 - ・ シングル/デュアル走査
 - ・ ガルバノ-レゾナント、ガルバノ-ガルバノ、レゾナント-ガルバノ-ガルバノ (RGG) スキャナ
 - ・ 空間変調モジュール (SLM) を用いた同時多点光刺激
 - ・ ベッセルビームを使用したボリュームイメージング
 - ・ スーパー広帯域補正走査光学系:
 - 光刺激/光照射アンケーシング
 - 2光子・3光子イメージング
- 顕微鏡本体の移動制御
 - ・ 用途に応じて3種から選択 (XYZ+回転, XYZ, Z)
 - ・ ペリスコープがレーザーアライメントを維持
- モーションコントロール用アクセサリ
 - ・ ピエゾ式対物レンズホルダ
 - ・ XYプラットフォーム
 - ・ Z軸ピエゾステージ
- PMT検出モジュール
 - ・ 冷却または非冷却 GaAsP PMT
 - ・ 最大4チャンネルの同時反射検出系
 - ・ 透過2チャンネルの同時透過検出系
- ワイドフィールド観察・撮像
 - ・ 三眼鏡筒およびサイエンティフィックカメラ
 - ・ 最大6個のダイクロイックミラー用落射蛍光照明装置
 - ・ 高出力LEDまたは液体ライトガイド光源
 - ・ 手動または電動式ダイクロイックチェンジャ
- 透過照明イメージング
 - ・ Dodtコントラスト
 - ・ レーザ走査によるDodtコントラスト
 - ・ 微分干渉顕微法 (DIC)
 - ・ ドライまたは高NA油浸コンデンサ (Nikon製)

※仕様は予告なく変更される場合がございます。予めご了承ください。

www.thorlabs.co.jp

E-mail: sales@thorlabs.jp

THORLABS

ソーラボジャパン株式会社 ・ 〒179-0081 東京都練馬区北町3-6-3 ・ TEL : 03-6915-7701

LuminoGraph I CMOS

WSE-6170 series model



LuminoGraph I CMOS

New Generation Cooled CMOS Camera

- Image size : 4M pixels
- Image file : 16bit TIFF
- Lens : F0.95
- Control : ImageSaver7 for Windows



Sample imaging

- Chemiluminescent PVDF (blotting)
- Fluorescent gel
- CBB staining gel

ATTO Corporation

3-2-2 Motoasakusa, Taito-ku, Tokyo, Japan
 TEL +81-3-5827-4861
 WEB site <https://www.atto.co.jp/>



A Z

We will provide thorough support to researchers aiming to achieve new advancements in biotechnologies.

創造と未来へ。
 研究の基礎から応用まで

Az Bio お客様の喜びを一番に考える アズバイオの研究開発支援サービス

バイオテクノロジーが世界中で目覚ましい進歩を遂げる中、アズバイオは、研究における技術開発とその未来を担うお客様に向けた研究支援サービスを行っています。取り扱いメーカー様は3000社以上にのぼり、一般試薬の販売から最新機器の販売やリースの仲介まで幅広くカバーし、バイオテクノロジー研究の最前線を支え続けています。今後お客様の喜びを一番に考えるとともに、最新の研究分野における継続的な情報提供に努めてまいります。

- | | |
|--|---|
| <p>< 取扱分野 ></p> <ul style="list-style-type: none"> ▶細胞培養関連機器及び試薬 ▶一般試薬 ▶分子生物学関連機器及び試薬 ▶分析機器 ▶画像関連機器 | <ul style="list-style-type: none"> ▶光学機器 ▶病理・形態関連機器 ▶実験機器 ▶糖鎖・蛋白・核酸関連機器 ▶設備機器 ▶各種受託サービス |
|--|---|

- | | | |
|--|---|--|
| <p>ニーズをサポートする
3つのテーマ 1</p> <p>幅広い
取り扱い製品</p> | <p>ニーズをサポートする
3つのテーマ 2</p> <p>最先端の
情報提供</p> | <p>ニーズをサポートする
3つのテーマ 3</p> <p>迅速な
対応</p> |
|--|---|--|

Az Bio バイオサイエンスのベーシックから最先端まで。 株式会社アズバイオ

大阪本社	住所: 〒530-0043 大阪市北区天満3-5-8 TEL: 06-6351-5351 FAX: 06-6351-5352 E-mail: osaka@azbio.co.jp
東京営業所	住所: 〒113-0031 東京都文京区根津1丁目1-19根津宮本ビル5F TEL: 03-5685-4500 FAX: 03-5685-4501 E-mail: tokyo@azbio.co.jp

Tuesday, August 18

8:30AM - 10:00AM

CONCURRENT SESSION IV

NEUROBIOLOGY II

1F Exhibition Hall D

Moderators: Jason Rihel, PhD
& Nathalie Jurisch-Yaksi, PhD

PHYSIOLOGY & METABOLISM

1F Exhibition Hall A

Moderators: Rachel Brewster,
PhD & Andrew Cox, PhD

REGENERATION

1F Exhibition Hall C

Moderators: Mathilda
Mommersteeg, PhD &
Alessandro De Simone, PhD

10:00AM - 10:30AM

COFFEE BREAK

1F Exhibition Hall Foyer

10:30AM - 12:00PM

PLENARY V

1F Exhibition Hall D

Moderators: Didier Stainier, PhD
& Yonghua Sun, PhD

12:00PM - 1:00PM

LUNCHEON III

SPONSORED BY ZEISS

1F Exhibition Hall A

**From Terabytes to Insights:
Utilizing arivis Software for
Advanced Zebrafish Embryo
Visualization and Analysis**

Delisa Garcia, PhD

12:00PM - 1:00PM

LUNCHEON III

SPONSORED BY NIKON SOLUTIONS

1F Exhibition Hall D

**Discovery of a Novel Intracellular
Degradation System Using
Zebrafish and Mice**
Hideaki Morisita, PhD

1:00PM - 2:45PM

POSTER SESSION III

1F Exhibition Hall Foyer

Topics: Early Development,
Morphogenesis & Patterning, Organ
Formation & Function, Physiology &
Metabolism, Regeneration, Stem
Cells, and Toxicology,
Environmental Biology and
Sustainability

3:00PM - 4:00PM

WORKSHOP SESSION II

EMERGING TECHNOLOGIES

1F Exhibition Hall D

ZEBRAFISH IN EDUCATION AND OUTREACH

1F Exhibition Hall A

CREATING A COMMON STANDARD: NEXT- GENERATION ATLASING IN FAIR RESEARCH

1F Exhibition Hall C

4:00PM - 4:30PM

COFFEE BREAK

1F Exhibition Hall D

4:30PM - 5:00PM

CHI-BIN CHIEN AWARD LECTURE

1F Exhibition Hall D

**Mechanisms of Growth in the
Vertebrate Skull: Lessons
from Zebrafish**

D'Juan Farmer, PhD

5:00PM - 6:00PM

COMMUNITY SESSIONS

ASIA-PACIFIC

1F Exhibition Hall D

THE AMERICAS

1F Exhibition Hall A

EUROPE

1F Exhibition Hall C

7:00PM - 9:00PM

BANQUET

Hotel Okura Kyoto

Dinner and celebration

**Prior sign up required*

Wednesday, August 21

8:30AM - 10:00AM

CONCURRENT SESSION V

EARLY DEVELOPMENT, MORPHOGENESIS AND PATTERNING II

1F Exhibition Hall D

Moderators: Margot L.K.
Williams, PhD & Merlin Lange,
PhD

LIFESPAN AND AGING

1F Exhibition Hall A

Moderators: Yumi Kim, PhD &
Miguel Godinho Ferreira, PhD

EVOLUTION AND COMPARATIVE BIOLOGY

1F Exhibition Hall C

Moderators: Tetsuya Nakamura,
PhD & Shigehiro Kuraku, PhD

10:00AM - 10:30AM

COFFEE BREAK

1F Exhibition Hall Foyer

10:30AM - 12:00PM

PLENARY VI

1F Exhibition Hall D

Moderators: Corinne Houart, PhD
& Peter Currie, PhD

12:00PM - 12:30PM

CLOSING REMARKS

1F Exhibition Hall D

MEITO system

System for breeding small fish



Small fish breeding equipment
Share in Japan

No. 1

This device is used in laboratories throughout Japan.



Meitosuien Co., Ltd.

506, Kumada, Nagakute-shi, Aichi, 480-1144, Japan
mail : info@remix-net.co.jp mobile : +81-90-8457-0520
web : <http://www.remix-net.co.jp> Fax : +81-561-61-5180



ひかり

ヒルガタワムシ



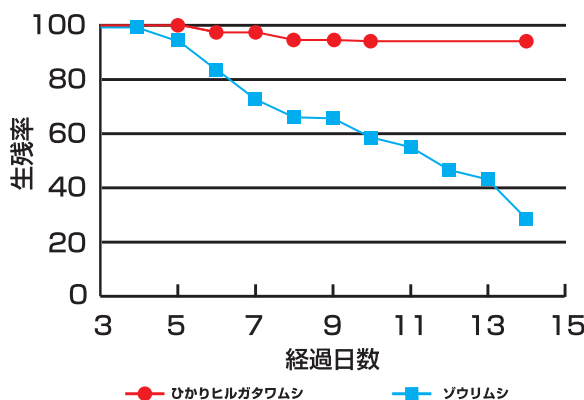
5枚入り×1
5枚入り×5

水に浸すだけでワムシが蘇生！その後、約1週間生き続けます。

稚魚の生残テスト

ゾウリムシと比較した結果、生エサより高い生残率が確認できました。

ココに
約3,000匹のワムシを
休眠させました



【魚種】
ゼブラフィッシュ稚魚
【給餌】
ひかりヒルガタワムシ、ゾウリムシ共に
5個/ml、1日1回投与
【試験条件】
20尾/1.5L、エアレーションなし、
25~27℃、同一腹仔使用

販売代理店：株式会社 名東水園

製造元：株式会社 **カーク**

研究開発 支援企業として、 「産・学・官・医」を 支えています。

株式会社カークは、「創造と努力」
「誠実と感謝」の企業理念のもと、
試薬、分析機器、検査薬、工業薬品などの
販売を通して社会に貢献しています。
研究開発支援企業として
あらゆるニーズにお応えいたします。

 **株式会社 カーク**

〒460-0002 名古屋市中区丸の内3-8-5 (本社)
TEL : 052-971-6533(代)
<https://www.cahc.co.jp>



Congratulations 2024 Award Winners!

2024 George Streisinger Award Winner



Making Connections for a Life in Science

August 18, 2024 | 4:45 -5:30pm

Judith Eisen, PhD
University of Oregon

2024 Christiane Nüsslein-Volhard Award Winner



Left Side Story – A Tale of Genes, Eyes and Developing Brains

August 19, 2024 | 4:45 -5:30pm

Steve Wilson, PhD
University College London

2024 Chi-Bin Chien Award Winner



Mechanisms of Growth in the Vertebrate Skull: Lessons from Zebrafish

August 20, 2024 | 4:30 -5:00pm

D’Juan Farmer, PhD
University of California at Los Angeles

困りごと解決カンパニー

TOMY

世界のトップを目指す博士の卵たちをサポート

トミー沖縄ノボサイエンス株式会社

TOMY OKINAWA NOVO SCIENCE CO., LTD

あなたの使い方は
どっち向き？

ラボ用オートクレーブ
FLS-1000

国際規格
IEC
61326-1
適合

国際規格
IEC
61010-2-040
適合

理化学・医療・バイオ関連の機器ならびに試薬をはじめ、
お客様のニーズに応じたハードやソフトなどの販売やサポートをおこなっています。

〒901-2131 沖縄県浦添市牧港2-44-1 ☎ 098-942-5133 / FAX 098-942-5166



あなたの研究を
お手伝いします！

リニューアルで
さらに使いやすく
なりました！

研究機器
オンライン

受託
オンライン



HPトップバナーから
簡単アクセス！

気になる
ワードで検索！

特徴

研究用途に合わせた検索もラクラク！

予算申請の金額に合わせた検索もラクラク！

予算申請に便利 指定範囲の金額で検索が可能に！

あのメーカーの製品を フリーワード検索やメーカーの
絞り込み検索も可能！

特徴

遺伝子発現解析や抗体作製から
病理標本作製まで幅広い受託サービスを掲載！

研究用途から 遺伝子工学、シーケンス解析、
受託サービス検索 タンパク質工学などのカテゴリ検索！

キャンペーン情報の確認も可能

あのメーカーの フリーワード検索やメーカーの
受託サービスを 絞り込み検索も可能！



和研薬株式会社
WAKENYAKU CO., LTD.

和研薬の **研究機器オンライン** **受託オンライン** は、

PC、スマートフォンやタブレット端末からアクセス！

WEBサイト随時更新中！
<https://www.wakenyaku.co.jp>



和研薬ホームページ



VAST FluoroImager™ Platform

New Automation with Fluorescence Imaging




Creating the Future Alongside Researchers

www.iwai-chem.co.jp

iwai IWAI CHEMICALS COMPANY
3-2-10 Nihonbashi-Honcho, Chuo-ku, Tokyo 103-0023 Japan
TEL +81-3-3241-2572 FAX +81-3-3270-2444

輸入試薬は、大阪薬研におまかせ下さい！！

大阪薬研では、海外試薬メーカーと直接輸入取引が可能です。中でも、Medchem、MyBioSource、DSHB、CLOUD-CLONE CORP.などは、全国から問い合わせを頂いており販売しております。また、上記以外の海外メーカーで日本への販売実績の少ないメーカーに対しても輸入交渉を行い、調査・ご提案させていただきます。

<p>MyBioSource (マイバイオソース)</p> <p>EGF、VEGF、様々なサイトカイン、抗体、タンパク質、ELISAキット及びカスタムELISAキット製品を、多種多様に販売しているメーカーです。</p>	<p>DSHB (ディーエスエイチビー)</p> <p>同社は、1986年にIowa大学が設立した非営利団体でmAbバンクとしてハイブローマとmAbを高品質にて維持し、また新しいハイブローマを入手し新たな抗体も開発中です。5000点を超えるハイブローマのコレクションより安価で提供いたします。</p>
<p>CLOUD-CLONE CORP. (クラウドクローン)</p> <p>技術の深い遺伝子とプライマー、cDNA、プラスミド、ハイブリドーマ細胞、および抽出液量の半量以上の抗体の大容量のタンパク質、19,000の抗体、および抽出液量の半量以上の抗体に基づいて、11,000のタンパク質、19,000の抗体、および7,000のイムノアッセイキットを短期間で提供している高品質な製品を取り揃えているメーカーです。</p>	<p>Medchem Express (メドケム)</p> <p>スクリーニングライブラリー、インヒビターキット、生体活性物質、抗体-薬物複合体、天然抽出物などを扱い、研究方法として使用される新規の生化学的試薬や、標準化合物、医薬品有効成分 (API)、天然物などを合わせた広範囲にわたる研究試薬を供給している最近人気のメーカーです。</p>
<p>Biorbyt Ltd. (ビオルビット)</p> <p>同社は一部の競合他社が提供できない分野で広範囲にテストされた試薬を提供しています。抗体や、ELISAキット、生化学物質、またはカスタムリクエストが必要な場合でも、さまざまな方法で当社にお任せいただけます。</p>	<p>AffinityBiosciences (アフィニティバイオサイエンス)</p> <p>同社は史上初、2年連続してCiteAbアワードを受賞し、抗体の論文引用数の増加率が最も大きく世界中の研究医部門で最高の抗体サプライヤーです。リン酸化抗体や様々な抗体などを安価・短期間で提供できます。</p>



バイオ研究関連機器全般

営業品目

株式会社
ア-ガス・サイエンス

分子生物学用機器
細胞工学用機器
遺伝子工学用機器
血液学用機器
.....
試薬全般
生化学用機器
分析用機器
ティスボーザル各種製品

〒563-0024 大阪府池田市鉢塚2-5-26
TEL. (072) 762-8151 FAX. (072) 762-5007
E-mail: argus@bz03.plala.or.jp

Keynote Lecturers

Mechanism Research on Epigenetic Regulation of Reproductive Development from model animals to human beings



Jie Qiao, MD, PhD

Medical Center for Human Reproduction,
Peking University Third Hospital,
Beijing, China

August 17, 2024 | 3:00 - 4:00pm

Searching for Principles of Tissue Regeneration and Aging in Mammalian Skin



Emi K. Nishimura, MD, PhD

The Institute of Medical Science,
The University of Tokyo,
Tokyo, Japan

August 19, 2024 | 4:45 -5:30pm



**Become a
Member of IZFS**

**SUPPORT ZEBRAFISH RESEARCH
THROUGH IZFS MEMBERSHIP**

www.izfs.org/membership

弛まぬ努力、限りなき探求心



八洲薬品株式会社

本社 〒567-0085 大阪府茨木市彩都あさぎ7丁目7番18号
彩都バイオヒルズセンター
TEL (072)640-1260 FAX (072)640-1271
堺営業所 〒592-8333 大阪府堺市西区浜寺石津町西1丁4番20号
TEL (072)244-1368 FAX (072)244-4055
京阪奈 〒574-0057 大阪府大東市新田西町3番10号
営業所 TEL (072)870-2711 FAX (072)870-2710

和歌山 〒640-8303 和歌山県和歌山市鳴神746-3番地
営業所 TEL (073)473-5951 FAX (073)474-0453
神戸 〒650-0047 兵庫県神戸市中央区港島南町1丁目5番地
営業所 神戸キメックセンタービル8階
TEL (078)306-1739 FAX (078)306-1751

<http://www.yashimachem.co.jp>

シリーズ累計3,500台以上の販売実績 共焦点スキャナユニット CSU-W1

YOKOGAWA ◆
Co-innovating tomorrow™



CSU-W1

ゼブラフィッシュの撮影事例を
多数掲載しております

- 低退色・低光毒性な
共焦点スキャナユニット
- 高速ライブセル
イメージングに最適
- 超解像・照明均一化等の
豊富なオプション

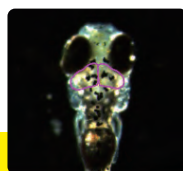
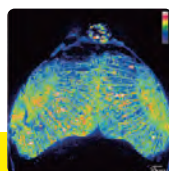
資料
ダウンロードは
こちら



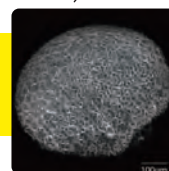
画像ご提供:

自然科学研究機構 共創戦略統括本部
定量・イメージング生物学研究部門
名誉教授 上野直人先生
広島大学 両生類研究センター
助教 鈴木誠先生

ゼブラフィッシュの
撮影事例はこちら



画像ご提供:
国立遺伝学研究所 発生遺伝学研究室
教授 川上浩一先生、研究員 武藤彩先生



横河電機株式会社

〒180-8750 東京都武蔵野市中町 2-9-32

Email: CSU@csv.yokogawa.co.jp

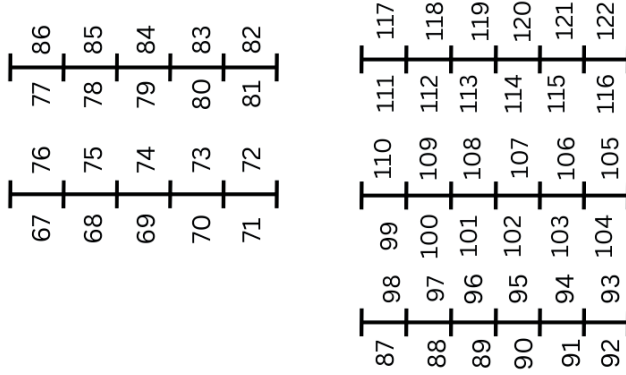
URL: <https://www.yokogawa.co.jp/solutions/products-and-services/life-science/spinning-disk-confocal/>

YOKOGAWA ◆ Co-innovating tomorrow™

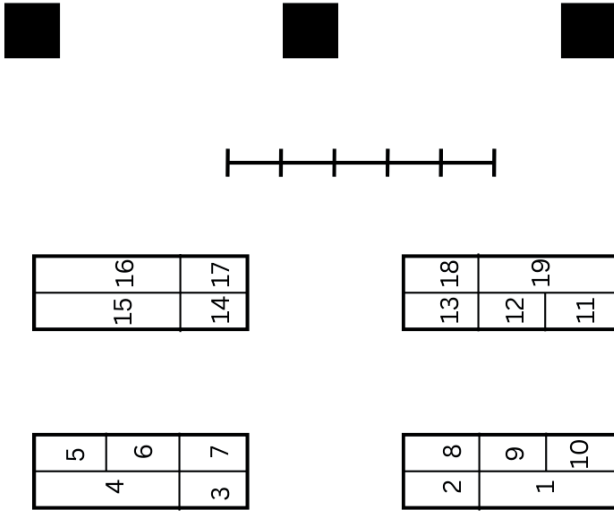
記載内容はお断りなく変更することがありますのでご了承ください。 All Rights Reserved, Copyright ©2024, by Yokogawa Electric Corporation

Poster Hall

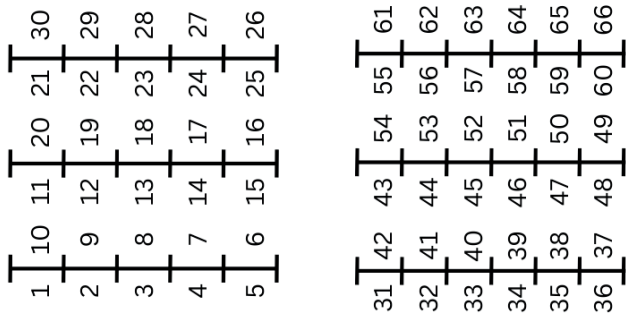
Poster Boards



Exhibitors



Poster Boards



23 22 21 20

Poster Session I

August 18 | 1:00 - 2:45pm

Topics: Cell Biology, Circuits & Behavior, Infection & Immunity, Neurobiology, Other and Reproduction

Poster Session II

August 19 | 1:00 - 2:45pm

Topics: Cardiovascular, Disease Models, Emerging Technologies, Evolution & Comparative Biology, and High Throughput Whole Organism Research

Poster Session III

August 20 | 1:00 - 2:45pm

Topics: Early Development, Morphogenesis & Patterning, Organ Formation & Function, Physiology & Metabolism, Regeneration, Stem Cells, and Toxicology, Environmental Biology and Sustainability

Poster Number Assignments & Poster Abstract Book



KIMTECH™



ビスタ™ ニトリルグローブ

やわらかく丈夫な、安全性と操作性に優れた
スーパーニトリルグローブです!

厚さ

中指先:0.11mm
手のひら:0.06mm
袖:0.05mm

長さ 242mm

200 枚入



- 食品衛生法に適合 ■ 生体適合試験クリア
- RoHS指令 (10物質)、REACH規定に準拠
- ASTM-F739 (JIS T8116) 液体防御、ASTM-F1671 ウィルス透過性試験合格
- ASTM D6978-05 抗がん剤耐性試験合格

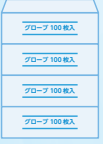
ゴミ削減

スペース削減

一般的な100枚入
グローブに比べ
収納スペースやゴミを
削減することができます



合計400枚



合計400枚

商品の特長などは
WEBより
ご確認ください。▶



研究用

注文コード	商品No.	サイズ	入数
188241	62825	XS	200枚/箱
188242	62826	S	200枚/箱
188243	62827	M	200枚/箱
188244	62828	L	200枚/箱

株式会社 **イナ・オプティカ**

<https://www.bio-bik.co.jp/>

E-mail:info@bio-bik.co.jp

本社

〒530-0043 大阪市北区天満2-1-29 オプテック・ダイエービル
TEL 06-6882-6006 FAX 06-6882-6116

東京事務所

〒103-0024 東京都中央区日本橋小舟町8-6 H'O日本橋小舟町408
TEL 03-6661-6438 FAX 03-6661-6439

福岡営業所

〒812-0015 福岡県福岡市博多区山王1-8-29
TEL 092-477-2620 FAX 092-477-2621

信州配送センター/長野営業所

〒399-3702 長野県上伊那郡飯島町飯島3856-261
TEL 0265-86-2434 FAX 0265-86-5613

Unlock the Microscopic World...



 **Microeyes**

<http://www.microeyes.co.jp/>

About Kyoto

Kyoto is the heart of Japan and a city with over a millennium of history. More than one million tourists visit Kyoto each year. There are literally thousands of Buddhist temples and Shinto shrines in Kyoto. In addition, the tea ceremony, flower arrangement, and kimonos can also be found in the cultural centers of Kyoto. It is easy to get around without speaking or understanding Japanese. Kyoto is friendly to foreign visitors and local people are renowned for their hospitality.



We will introduce useful websites for enjoying Kyoto!



Kyoto Travel Guide

This is the first official guide to Kyoto. A must-see for all the visitors to Kyoto!



“Arukumachi KYOTO Route Planner 'Bus and Train Veteran' ”

This is a handy tool that helps people who are unfamiliar with the geography of Kyoto to get around smoothly using buses and trains.



Kyoto YUKA & KAWADOKO Outdoor Riverside Dining

See delightful Kyoto YUKA & KAWADOKO outdoor riverside restaurants. A must-try Kyoto summer experience!



Cycling in Kyoto

Kyoto is a city where you can easily go anywhere on a bicycle with feeling the breeze. There are numerous attractive spots, including shrines and temples, are compactly located, so renting a bicycle is a very convenient way to sightseeing.

Sightseeing spots readily accessible from Kyoto



Osaka

The second largest city in Japan



Nara

The old capital of Japan (The World Heritage Site)



Himeji-jō

Japan White Heron Castle
(The World Heritage Site)



Shiga · Biwako

Lake Biwa is famous as the largest lake in Japan

Guide for when you are feeling ill



For safe travels in Japan

This is a website to help you receive medical care in Japan.



Save the Date

19TH INTERNATIONAL ZEBRAFISH CONFERENCE

Madison, WI, USA

July 9-13 2025

